

CLIFROCK OVATION FIRE PIT



Fire Pits | Fireplaces

This summer your outdoor fire pit will be a striking piece for your backyard entertainment. Then, during Fall and Winter, it becomes a charming and warm place for your family and friends to gather around. No matter what season it is, you will find that your favorite spot will be outside by the Ovation Fire Pit!

- LIGHT WEIGHT
- CAN BE USED ON DECKS
- SELF SUPPORTING
- QUICK INSTALLATION
- ENGINEERED SPECIFICALLY FOR OUTDOOR ELEMENTS

VERTICAL PANEL TECHNOLOGY

Vertical Panel Technology is the smart alternative to block and stone masonry. Reinforced concrete panels and easy installation process makes constructing outdoor living spaces quick and affordable. This technology enables you to choose the texture profile and color palette to fit the natural landscape of any backyard or outdoor setting. Reduce material waste and environmental impact, while delivering the highest quality vertical masonry structures.



Ovation Fire Pit shown in Stacked Stone texture in Bluestone with Bluestone top

CLIFROCK OVATION FIRE PIT

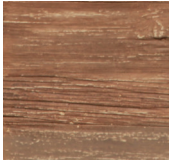
DIMENSIONS

Base 40"
Top 44"

Height
18" without top
19 1/2" with top

CUSTOMIZING YOUR FIRE PIT IS EASY!

1 CHOOSE YOUR TEXTURE



Barn Wood*



Stacked Stone



Ledge Stone

* Barn Wood available in Rustic Brown color only.

2 CHOOSE YOUR COLOR



Biscotti Tan



NY Bluestone

3 CHOOSE YOUR TOP



Brown



Bluestone

4 ADD YOUR ELEMENT

Available in Natural Gas (NG) and Propane (LP) options

*Standard Premium Package has Match Throw Burner (MT)

Upgrade Ignition systems available:

- Remote Control FPB-19RBSTFS -N or -P
- Manual Spark Ignition FPB-19RSBSTMSI -N

Portable Propane Tank Connections: (required for connection)

- FG-12QDK, FG-LPRK and either U1 - 6C - S or U1 - 6D - S

Portable Propane Tank Fitting: (sold separately)

- U1 - 6C - S is for Manual Spark Ignition (TMSI)
- U1 - 6D - S is for Match Throw (MT)

CLIFROCK OVATION FIRE PIT

*PREMIUM PACKAGE INCLUDES:

- 2- 18" high half circle high strength ClifRock panel
- 2- 18" high structural connection units, wood grain
- 1- 44" round stone-face top with cut out
- LP Conversion piece
- 1- 19" Round Pan Match Throw with lip natural gas
- 20 lb bag of Lava Rocks
- 2- 6"x 12" vents • Must be installed per manufacturer's instructions (not shown)

Kit includes a tube of concrete adhesive for assembly, ratchet strap and instructions.

