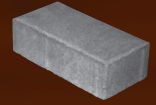


# HOLLANDSTONE

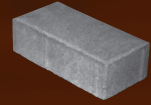


HOLLAND STONE: Oyster Blend (Sailor)  
Border: Holland Stone / Granite City Blend (Soldier Course)

LIVE LIFE IN COLOR!

**NICOLock**<sup>®</sup>  
paving stones & retaining walls  
**n** paver-shield<sup>™</sup>

# HOLLANDSTONE



## FEATURES

Classic brick shape • Flat surface • Chamfered edges



A

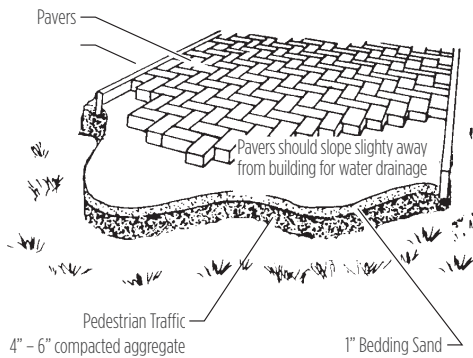
## SPECIFICATIONS

	width	length	thickness	s.f./per pc.	s.f./pallet	pcs./pallet	lbs./pallet
A	4"	8"	2-3/8"	4.5	120	540	3,360

## INSTALLATION GUIDELINES: SAND

After excavation, compact the subgrade and install a woven separation fabric. Spread and compact a base of clean, graded, dense aggregate (road base). Typical compacted base thickness is 4-6" for pedestrian applications. Pavers are set on a loosely screeded 1" bed of graded, clean concrete sand. Maintain a joint size of 1/16" - 3/16". When pavers are set, compact paving stones into sand with mechanical plate vibrator. Joint sand may be spread over paving stones during compaction. Installed pavers should be set 1/8" to 1/4" above final elevations to compensate for any potential settlement. Spread clean dry sand over surface and broom sweep to fill joints.

## CROSS-SECTION OF TYPICAL INSTALLATION



**NOTE:** All measurements are nominal. Variance in square footage or linear footage coverage can be up to 5% depending on joint width. The possible occurrence of efflorescence does not affect the structural integrity of the product. Efflorescence is a normal occurrence in concrete products and will dissipate with normal weathering. The use of concrete as a base or setting bed may increase the possibility of efflorescence.

**CAUTION:** Always use a plate compactor with a pad when installing any textured paving stone.

## COLOR SELECTION



\* denotes premium color



| nicolock.com

