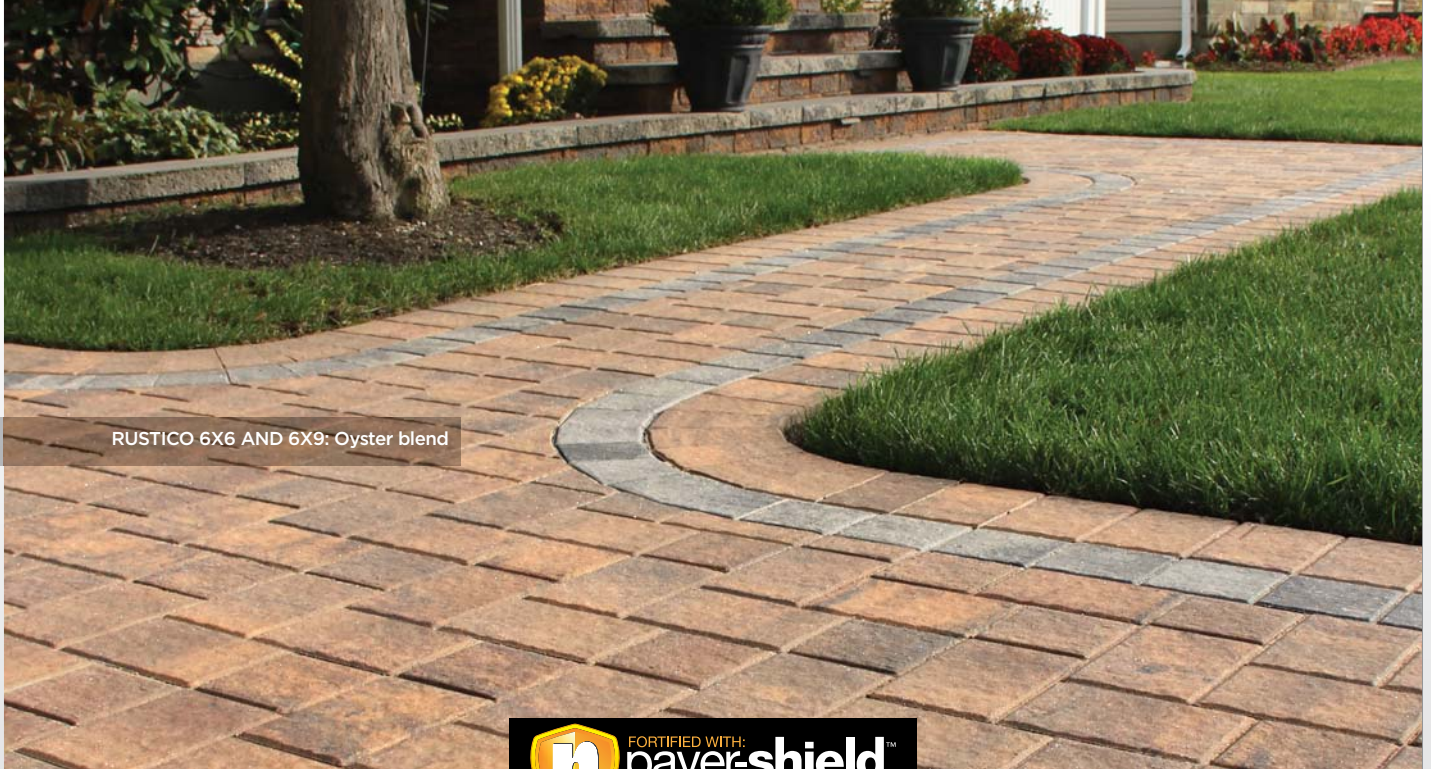


# RUSTICO

6X6  
6X9  
12X12

Sizes sold separately.



RUSTICO 6X6 AND 6X9: Oyster blend



RUSTICO 12 X 12: Granite City Blend



[nicolock.com](http://nicolock.com)

**nicolock**<sup>®</sup>  
paving stones & retaining walls



new york • new jersey • new england • maryland

# RUSTICO

Sizes sold separately.

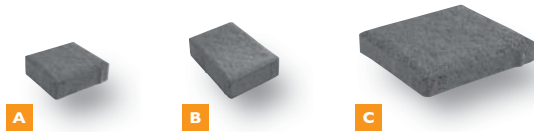
6X6  
6X9  
12X12

Manufactured by:

**nicolock**  
paving stones & retaining walls

## Features

- Multi-size rectangular shapes • Slightly dimpled surface
- Chamfered edges • Square corners



## Specifications

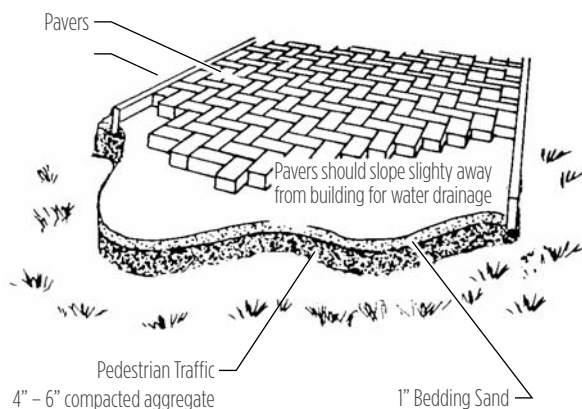
	width	length	thickness	pcs./s.f.	s.f./pallet	pcs./pallet	lbs./pallet
<b>A</b>	6"	6"	2-3/8"	4	120	480	3,360
<b>B</b>	6"	9"	2-3/8"	2.7	113	300	3,164
<b>C</b>	12"	12"	2-3/8"	1	120	120	3,360

Sizes sold separately. \* denotes premium color

### INSTALLATION GUIDELINES: SAND

After excavation, compact the subgrade and install a woven separation fabric. Spread and compact a base of clean, graded, dense aggregate (road base). Typical compacted base thickness is 4-6" for pedestrian applications. Pavers are set on a loosely screeded 1" bed of graded, clean concrete sand. Maintain a joint size of 1/16" - 3/16". When pavers are set, compact paving stones into sand with mechanical plate vibrator. Joint sand may be spread over paving stones during compaction. Installed pavers should be set 1/8" to 1/4" above final elevations to compensate for any potential settlement. Spread clean dry sand over surface and broom sweep to fill joints.

### CROSS-SECTION OF TYPICAL INSTALLATION



**CAUTION: Always use a plate compactor with a pad when installing any textured paving stone.**

## Color Selections



adobe blend



charcoal



fire island blend



golden brown blend



granite city blend



terra cotta blend



westchester blend (6x9 only)



autumn blend\*



bayberry blend\*



caramel tan\*



crab orchard blend\*



marble blend\*



oyster blend\*



travertina\*



### Nicolock's Paver-Shield™

- Ultra-dense surface with more color and more protection. Nicolock has color from top to bottom throughout the paver ensuring a lifetime of beauty. Iron oxide pigments are guaranteed not to fade!

**CAUTION: Always use a plate compactor with a pad when installing textured paving stones.**

**NOTE:** All measurements are nominal. Variance in square footage or linear footage coverage can be up to 5% depending on joint width. The possible occurrence of efflorescence does not affect the structural integrity of the product. Efflorescence is a normal occurrence in concrete products and will dissipate with normal weathering. The use of concrete as a base or setting bed may increase the possibility of efflorescence.

# RUSTICO

6X6  
6X9  
12X12



RUSTICO 6X6 AND 6X9: Oyster blend  
Border: RUSTICO 6X9: Granite City Blend



**nicolock**  
paving stones & retaining walls



new york • new jersey • new england • maryland



[nicolock.com](http://nicolock.com)